

Job: _____

Item: _____

Quantity: _____

“Quick Change II” Cantilever Shelving



Change Your Shelving As Quickly As You Change Your Mind!

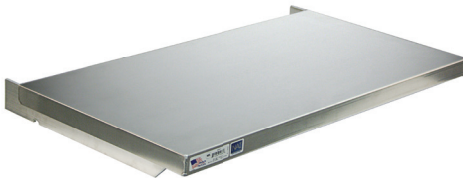
- Wall/Ceiling mounted aluminum cantilever shelving for walk-in coolers eliminates the need for shelving replacements due to rusting.
- The wall/ceiling mounted uprights have locking tabs spaced on 12” centers.
- The units are easily adjustable and with no front post, allowing easier access and provides more storage space per shelf.
- Units available in 18” and 24” deep shelves in multiple lengths.
- Shelving runs can be created using common (center) uprights as shown.
- Five-Year Guarantee against material defects and workmanship.
- Lifetime Guarantee against rust and corrosion.



H.D. Bar Shelf • 900# Wt. Capacity

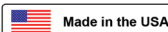


T-Bar Shelf • 900# Wt. Capacity



Solid Brute Shelf • 700# Wt. Capacity

This information is for general sales and engineering use only. New Age Industrial reserves the right to modify or make changes at any time without notice to materials and specifications.



Distributed by:

Job: _____

Item: _____

Quantity: _____

“Quick Change II” Cantilever Shelving



The above unit consists of the following:

- | | |
|------------------|-------------------|
| 1. Solid Shelf | 3. Common Upright |
| 2. Right Upright | 4. Left Upright |

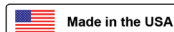
Ordering Instructions

- Determine the number of shelving sections in the shelving run – Find type, number, and depth of shelves required per section.
- Horizontal braces are not needed.
- Shelving sections 3', 4', and 5' long require two uprights, one left and one right.
- Run lengths over 5' require a left and right uprights on the ends and a common upright between each section. (as shown in the picture above).

Note

- Upright height (length) is determined by ceiling height.
- Actual shelf depth from the wall to the front of the shelf is 3" more than the listed shelf depth.
- The actual shelving run length is found by adding 6-½" to the sum of the shelf lengths in a shelving run; A typical 7' shelving run which uses a 36" shelf length and a 48" shelf length is actually 90-½" long (7' 6-½").

This information is for general sales and engineering use only. New Age Industrial reserves the right to modify or make changes at any time without notice to materials and specifications.



Model No.	Size D-L	Wt. Cap.	Ship Wt.
-----------	----------	----------	----------

H.D. BAR SHELF

2501.....	18" x 36".....	900#7#
2502.....	18" x 42".....	900#8#
2503.....	18" x 48".....	900#8#
2505.....	18" x 60".....	900#10#
2511.....	24" x 36".....	900#8#
2512.....	24" x 42".....	900#8#
2513.....	24" x 48".....	900#9#
2515.....	24" x 60".....	900#11#

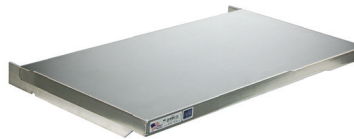
Full radius front edge.



T-BAR SHELF

2521.....	18" x 36".....	900#10#
2522.....	18" x 42".....	900#11#
2523.....	18" x 48".....	900#12#
2525.....	18" x 60".....	900#14#
2531.....	24" x 36".....	900#11#
2532.....	24" x 42".....	900#12#
2533.....	24" x 48".....	900#14#
2535.....	24" x 60".....	900#17#

Ideal for smaller product as well as heavier loads.



SOLID REINFORCED SHELF

2541.....	18" x 36".....	700#10#
2542.....	18" x 42".....	700#11#
2543.....	18" x 48".....	700#12#
2545.....	18" x 60".....	700#14#
2551.....	24" x 36".....	700#11#
2552.....	24" x 42".....	700#12#
2553.....	24" x 48".....	700#13#
2555.....	24" x 60".....	700#19#

For smaller products and spill control.

Model No.	Item Description	Ship Wt.
-----------	------------------	----------

WALL & CEILING MOUNTED UPRIGHTS

95403.....	72" Left Upright	9#
95404.....	72" Right Upright	9#
95405.....	72" Common Upright	10#
97753.....	84" Left Upright	11#
97755.....	84" Right Upright.....	11#
97754.....	84" Common Upright	12#
95631.....	96" Left Upright	13#
95632.....	96" Right Upright	13#
95633.....	96" Common Upright	14#
96617.....	108" Left Upright	15#
96618.....	108" Right Upright.....	15#
96619.....	108" Common Upright	16#

Uprights have locking tabs spaced on 12" centers.

Distributed by: