

B-1150SS (1300/1500/1650) ICE STORAGE BINS

Item # _____

Project: _____

Qty: _____

*AutoCad available on KCL

B-1150SS
(1300/1500/1650)
7/24/2015
Item #13178

BIN DIMENSIONS
W x D x H

B-1150SS
48 x 41 x 60*

B-1300SS
48 x 41 x 66*

B-1500SS
60 x 41 x 62*

B-1650SS
60 x 41 x 66*

*with 6" legs

Depth includes 10"
for door installation



B-1150SS
Shown




B-1300SS
Shown



B-1500SS
Shown



B-1650SS
Shown

- Available in the stainless steel "SS" exterior style
- SS = Stainless steel front, sides, back and bottom
- Easy cleaning and long lasting attractive appearance
- Seamless polyethylene bin liner
- Foamed-in-place polyurethane insulation, in all bin walls and bottom, which provides maximum ice preservation
- New baffle design increases ice accessibility by 30%
- View windows provide instant inspection and thermal break
- Pouch style insulated door prevents condensation while providing maximum access and minimal spillage
- Sealed door gasket reduces risk of airborne bacteria
- All bins include Universal Top Kit - note application guide to verify fit
- 6" adjustable stainless steel legs
- 82 oz. scoop - Protected by H-GUARD Plus Antimicrobial Agent 



Warranty

Valid in United States, Canada, Puerto Rico, & U.S. Territories. Contact factory for warranty in other countries.

Five Year - Parts & Labor.



HOSHIZAKI

DIMENSIONS

W x D x H

B-1150SS
48 x 41 x 60"

B-1300SS
48 x 41 x 66"

B-1500SS
60 x 41 x 62"

B-1650SS
60 x 41 x 66"
*with 6" legs

ICE STORAGE BINS

- Ice storage capacity from 1150 lbs. to 1605 lbs.
- Available in stainless steel "SS" exterior style
- "SS" = Stainless steel front, back, sides and bottom
- Depth includes 10" for door installation

B-1150SS (1300/1500/1650) ICE STORAGE BINS

SPECIFICATIONS

| Model # | Ice Storage Capacity | Shipping Weight |
|----------|----------------------|-----------------|
| B-1150SS | 1150 | 345 |
| B-1300SS | 1275 | 365 |
| B-1500SS | 1500 | 395 |
| B-1650SS | 1605 | 415 |

ICE MACHINE MODEL APPLICATION

| Width for Ice Machine | 48" Width Bin B-1150/1300SS | 60" Width Bin B-1500/1650SS |
|---|--------------------------------|-----------------------------------|
| 22" KM-320M KM-340M KM-515M KM-600M KM-650M F-450M F-801M F-1001M | Universal Top Kit | N/A |
| 30" KM-901M KM-1340M KM-1601M KML Series F-1501M F-2001M | Universal Top Kit | Universal Top Kit Need HS-2111 |
| KMD/KMS Series* | N/A | N/A |
| 44" 2 KM-320M 2 KM-340M 2 KM-515M 2 KM-600M 2 KM-650M 2 F-450M 2 F-801M 2 F-1001M | N/A | Universal Top Kit |
| 48" KM-1301S KM-1400S KM-1601S KM-1900S KM-2100S KM-2500S | Universal Top Kit | Universal Top Kit |
| 60" 2 KM-901M 2 KM-1340M 2 KM-1601M 2 KML Series 2 KMD Series* 2 F-1501M 2 F-2001M | NOT AVAILABLE | NOT AVAILABLE |

* The B-1150SS, B-1300SS, B-1500SS and B-1650SS are equipped with a universal top kit

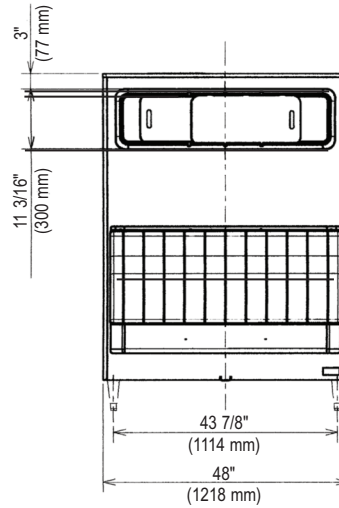
PLUMBING

- 1" FPT Drain

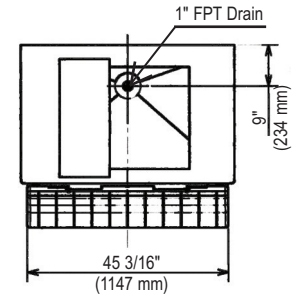


© HOSHIZAKI AMERICA, INC.

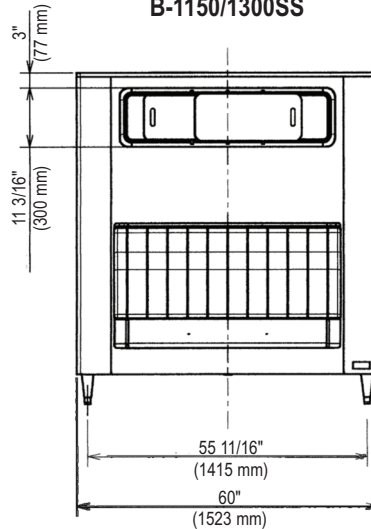
Intertek ISO9001-ISO14001



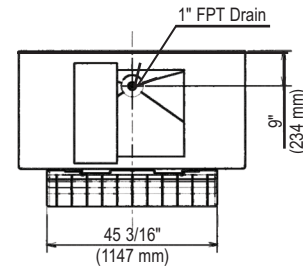
FRONT VIEW
B-1150/1300SS



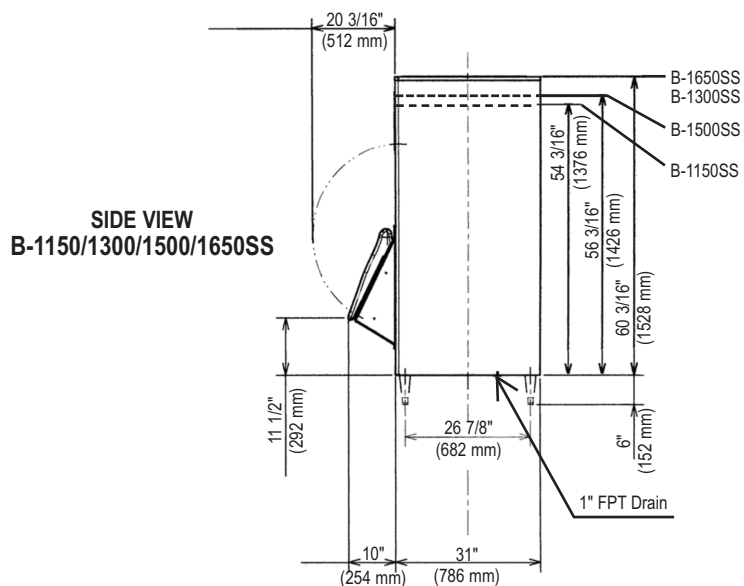
TOP VIEW
B-1150/1300SS



FRONT VIEW
B-1500/1650SS



TOP VIEW
B-1500/1650SS



SIDE VIEW
B-1150/1300/1500/1650SS

