



STAINLESS STEEL
MOP SINK CABINET
9-OPC-84



Item #: _____ Qty #: _____
Model #: _____
Project #: _____



Cabinet Includes
Floor Mop Sink



FEATURES:

- 16" x 20" x 12" Sink Bowl with drain
- Louvered Side Panels for ventilation
- Single Left-Hinged Door
- Fixed Stainless Steel Utility Shelf
- 2 Mop Holders (1 on each side)

CONSTRUCTION:

All TIG welded.
Welded areas blended to match adjacent surfaces and to a satin finish.

MATERIAL:

- 16 gauge type "304" Series Sink Bowl
- 18 gauge type "304" Series Sink Bowl Apron
- 18 gauge type "430" Series Stainless Steel Cabinet

OPTIONAL:

- TA-46** - Door Lock
- K-240** - Service Faucet
- K-94-CAB** - 18 gauge type "304" Stainless Steel Cabinet Upgrade

Right-hand Door Swing
(please specify when ordering)

Net Weight: 250 lbs.



Customer Service Available To Assist You **1-800-645-3166** 8:30 am - 8:00 pm E.S.T.

For Orders & Customer Service:

Email: customer@advancetabco.com or Fax: 631-242-6900

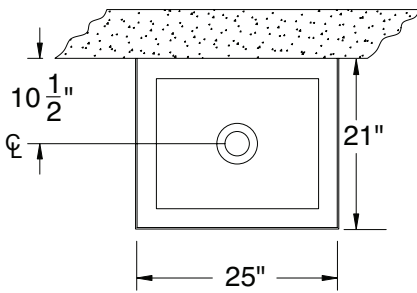
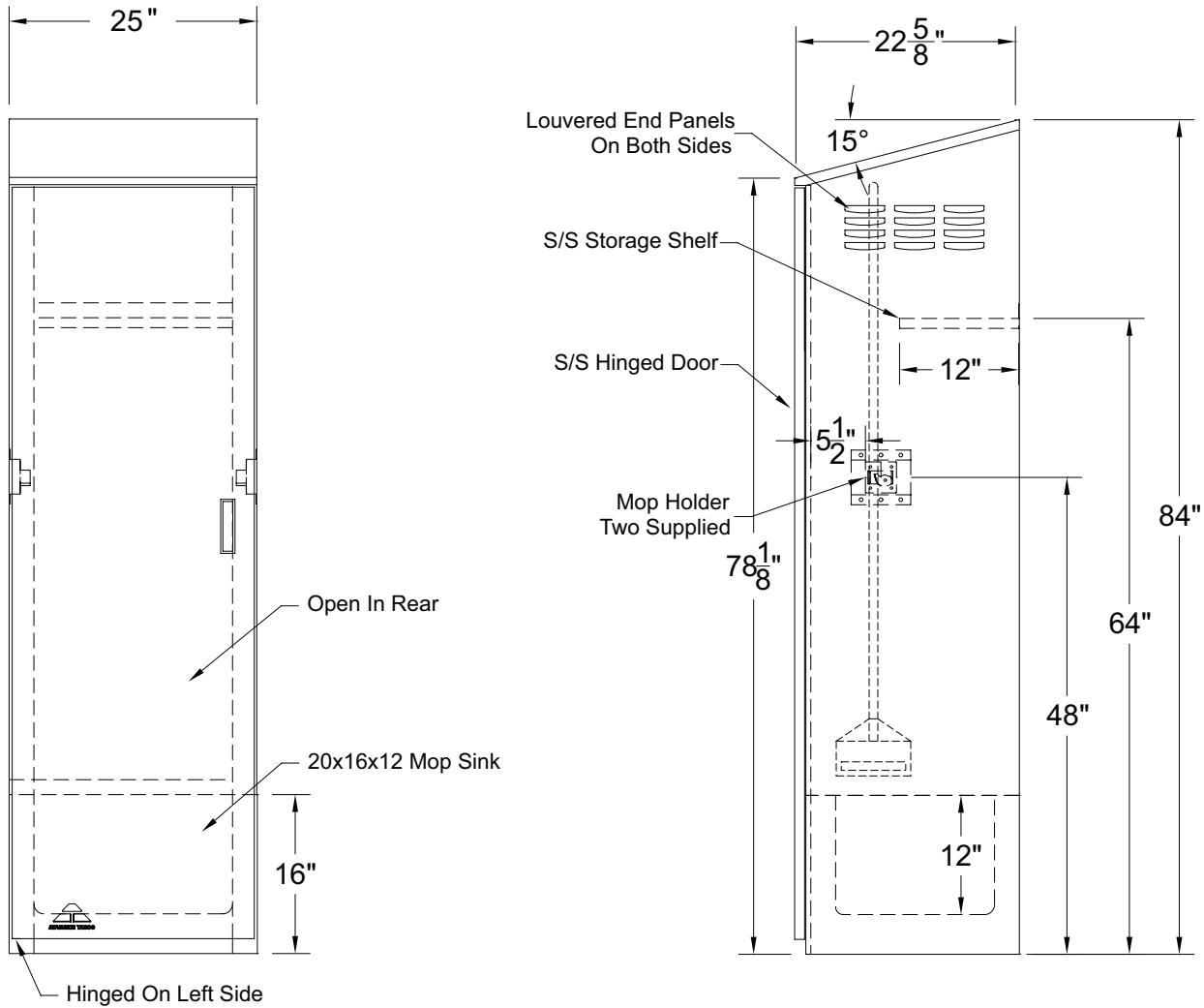
For Smart Fabrication™ Quotes:

Email: smartfab@advancetabco.com or Fax: 631-586-2933

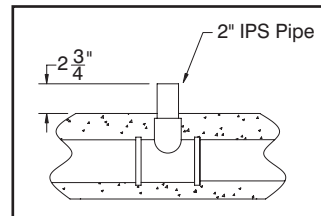
DIMENSIONS and SPECIFICATIONS

ALL DIMENSIONS ARE TYPICAL

TOL ± .500"



Mop Sink Detail



Drain Detail

