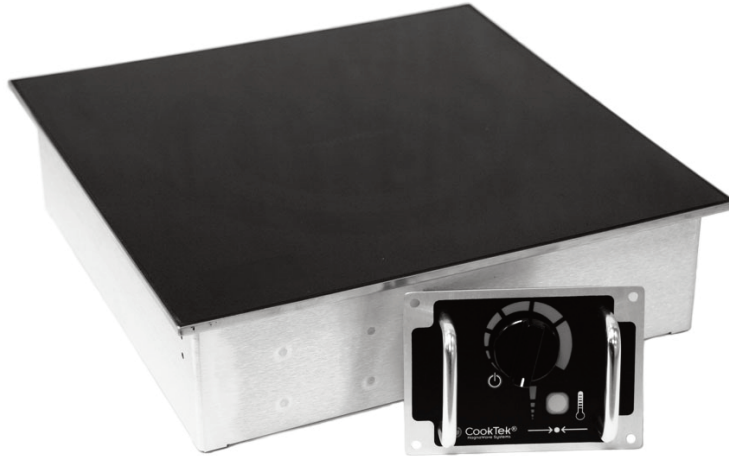


Product Name	Drop-in Single Burner Cooktop	Quantity		Item #	
--------------	-------------------------------	----------	--	--------	--



Note: Induction cooking requires the use of induction compatible (i.e. magnetic) pots and pans.



Standard Features

- Drop-in countertop design with stainless steel edging, aluminum housing and control box, heavy duty electronic components, and high impact, thick, glass-ceramic top engineered for use in commercial kitchens
- Control knob for ease of use and automatic power or temperature control
- Temperature control allows for 27 precise temperature settings and 20 power cook settings
- Pan Maximizer feature achieves maximum heating of any induction compatible pan
- Drop-in cooktops and control boxes engineered and manufactured for easy installation
- Microprocessor monitors vital components 120 times per second to check for overheating, power supply problems, and more. Cooktop shuts off and displays error codes enabling user to diagnose and correct minor problems
- LED display for precise user feedback
- Automatic pan detection allows for instant energy transmission to pan and almost no energy consumption when pan is not present
- Automatic shut-off feature prohibits overheating
- Easy to clean glass-ceramic top surface
- Integral cooling fan keeps internal electronics cool
- Available in 1500 and 1800 watts (100-120VAC), 2500 and 3500 watts (208-240VAC)
- One year limited warranty
- Made in the USA*

Specifications

Shall be a CookTek drop-in induction cooktop, model _____ with a total kW rating of _____.

Unit shall be manufactured in the United States and constructed with a stainless steel edging and aluminum control box.

Unit shall be equipped with a built-in microprocessor that performs precise temperature control, auto shut-off to prevent overheating, self-diagnostics, and a pan maximizer feature that ensures maximum heating of induction compatible pans.

Unit shall have an adjustable electronic control with 20 power cook settings and 27 precise temperature settings.

Unit shall have a LED display located underneath the top for precise user feedback.

Unit shall operate on _____ power with integral _____ cord and plug (supplied).

*of USA and imported parts

CookTek Induction Systems, LLC
 156 N. Jefferson St. Ste 300
 Chicago, IL 60661-1436, USA
 www.cooktek.com

Tel: 1.312.563.9600 Fax: 1.312.432.6220
 Toll Free: 1.888.COOKTEK (266.5835)
 Toll Free Fax: 1.888.COOKFAX (266.5329)

DROP-IN SINGLE BURNER COOKTOP

Dimensions		
	inches	mm
A	13.75	349
B	12.75	323
C	3.70	93
D	13.125	333
E	4.12	104
F	3.75	95
G	3.00	76
H	5.25	133
J	0.50	12
K	0.25	6
L	2.75	69
M	1.44	36

- Dedicated circuit required
- 100-120VAC units require 50 CFM (1.5m³/min) free air flow and maximum (do not exceed) ambient air temperature of 50°C/122°F
- 208-240VAC units require 70 CFM (2.0m³/min) free air flow and maximum (do not exceed) ambient air temperature of 50°C/122°F
- Cooling clearance: 2" (55mm) for front, sides, and rear, 6" (152mm) below

Specifications

MCD1500, MCD1800, MCD2500, MCD3500

Model Number	MCD1500	MCD1800	MCD2500	MCD3500
Power Requirements	120VAC, 1 Ph	100-120VAC, 1 Ph	208-240VAC, 1 Ph	208-240VAC, 1 Ph
Power Consumption	1500W (max rating)	1800W (max rating)	2500W (max rating)	3500W (max rating)
BTU Comparison	13,000 BTU	16,000 BTU	22,000 BTU	31,000 BTU
Voltage	120VAC, 50/60 Hz	100-120VAC, 50/60 Hz	208-240VAC, 50/60 Hz	208-240VAC, 50/60 Hz
Amperage	12.5A (max)	15A (max)	11A (max)	17A (max)
Power Range	100-1500W	100-1800W	100-2500W	100-3500W
Temperature Range	85-500°F / 30-260°C	85-500°F / 30-260°C	85-500°F / 30-260°C	85-500°F / 30-260°C
Dimensions (in)	13.75" x 13.75" x 3.7"	13.75" x 13.75" x 3.7"	13.75" x 13.75" x 3.7"	13.75" x 13.75" x 3.7"
Dimensions (mm)	349 x 349 x 93	349 x 349 x 93	349 x 349 x 93	349 x 349 x 93
Cutout Dimensions (in)	13.125" x 13.125"	13.125" x 13.125"	13.125" x 13.125"	13.125" x 13.125"
Cutout Dimensions (mm)	333 x 333	333 x 333	333 x 333	333 x 333
Weight	15 lbs / 6.8 kg	15 lbs / 6.8 kg	15 lbs / 6.8 kg	15 lbs / 6.8 kg
Packaged Weight	18 lbs / 8.2 kg	18 lbs / 8.2 kg	18 lbs / 8.2 kg	18 lbs / 8.2 kg
Packaged Dimensions (in)	20" x 20" x 9"	20" x 20" x 9"	20" x 20" x 9"	20" x 20" x 9"
Packaged Dims. (mm)	508 x 508 x 229	508 x 508 x 229	508 x 508 x 229	508 x 508 x 229
Power Cord Length	6 ft / 1.8 m	6 ft / 1.8 m	6 ft / 1.8 m	6 ft / 1.8 m
Plug Type	NEMA 5-15P	NEMA 5-15P	NEMA 6-20P	NEMA 6-20P
Rmte Ctrl Box Cord Length	42" / 1.07 m	42" / 1.07 m	42" / 1.07 m	42" / 1.07 m
Warranty	12 months limited parts and labor			

Note: Ambient air should not exceed 50°C/122°F. Dedicated circuit required. Many local codes exist, and it is the Owner and Installer's responsibility to comply with those codes. CookTek continually improves its products and reserves the right to change or improve specifications without notice.

CookTek Induction Systems, LLC
 156 N. Jefferson St. Ste 300
 Chicago, IL 60661-1436, USA
 www.cooktek.com

Tel: 1.312.563.9600 Fax: 1.312.432.6220
 Toll Free: 1.888.COOKTEK (266.5835)
 Toll Free Fax: 1.888.COOKFAX (266.5329)

COOKTEK®