



# Tilting Skillet

37-Gallon – Gas Heated (Braising Pan)

Model: TS-37G

## LoLo Tilting Skillet Performance Features:

- Heavy precision-welded stainless steel construction
- 9" (229 mm) deep pan body with rounded corners
- True open-leg design for easy cleaning
- Rugged 2" square tubing pan body cradle
- Full 90° smooth-action, manual-crank pan tilt
- Pouring lip centered on pan body
- Energy saving 96,000 BTU/hr power input
- Ten long burners ensure even pan heating
- Simple standing pilot ignition
- Spring-assisted, hinged cover with solid-bar handle
- Full 30-gallon (112 liter) working capacity (80% of 37 gal.)
- Four adjustable bullet feet
- Simple, convenient, right-side-mounted controls

## LoLo Tilting Skillet Control & Safety Features:

- Power ON switch
- Knob-set, cook-temp thermostat
- Amber heating light, plus
- Automatic gas valve & pressure regulator
- High-limit thermostat
- Pan tilt power cut-off (Beyond 10 degrees)

## LoLo Tilting Skillet Available Accessories:

- Propane gas/elevation conversion kit  
(Specify install altitude)
- Flanged feet kit (set of 4), height adjustable
- Caster-mounting kit (set of 4)
- Pouring lip strainer



## LoLo Short Specification:

Tilting skillet/braising pan to be a **LoLo Model TS-37G**, 37-gallon, gas-heated model with 30-gallon (112 liter) working capacity; a 9" (229 mm) deep pan body with rounded corners, manual-crank tilt and rim-mounted pouring lip; mounted in a true open leg support frame fabricated from 2" square tubing; spring-assisted hinged cover with solid-bar handle; 96,000 BTU/hr firing rate from ten full-pan-depth burners; with tilt-housing-mounted, water-resistant controls; and all the performance features listed, plus any accessories checked.

- Steamer pan insert kit (for steaming/holding)
- Front-mounted pan holder (for easy pouring)
- Faucet mounting bracket (faucet by others)

## LoLo Value Proposition:

- Low Price – Why pay more?
- Local Inventory – Why wait for factory shipment?
- Local Parts & Service – plus factory 800# support!
- Made in the U.S.A. by skilled men & women!

LoLo Commercial Foodservice Cooking Equipment

5925 I-55 South, Byram, MS 39272

877.246.5656

[www.getlolo.com](http://www.getlolo.com)

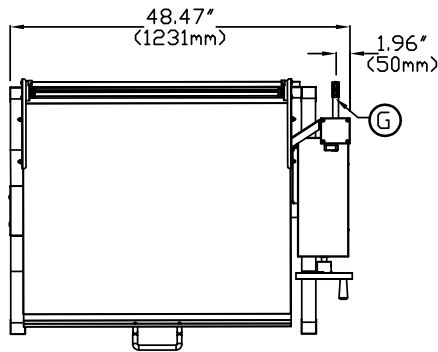
159752 Rev B Issued: 7/2012



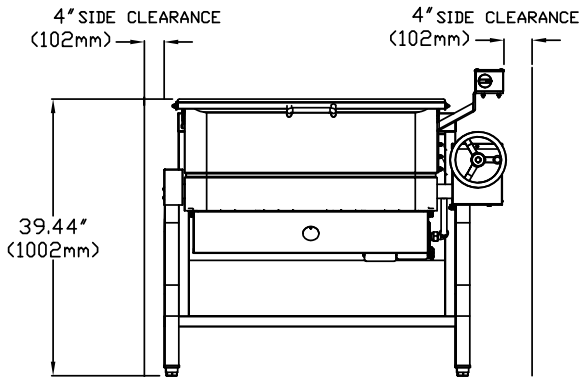
# Tilting Skillet

37-Gallon – Gas Heated (Braising Pan)

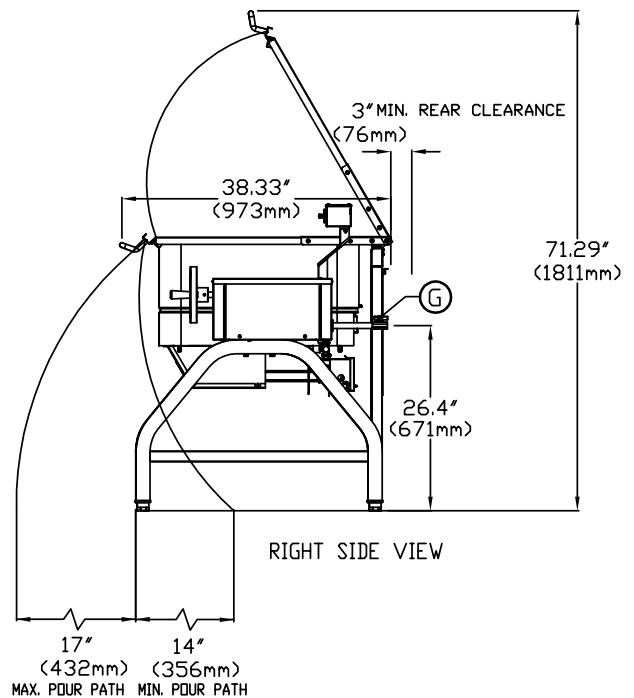
Model: TS-37G



TOP VIEW



FRONT VIEW



RIGHT SIDE VIEW

*Key Dimensions: US/metric		Performance Characteristics	
Unit Width:	48.47" 1231 mm	Pan Body Tilt:	Through 90°
Rim Height:	39.44" 1002 mm	Temp. Range:	200 to 400° F
Unit Depth:	38.33" 973 mm	Rim Capacity:	37 gal. 140 L
Ship. Weight:	450 lbs 204 kg	Working Cap.:	30 gal. 112 L

\* **IMPORTANT:** See drawing for side & rear clearance.

(G) Gas Required: 1/2" NPT pipe connection		
Type:	Natural	Propane
Firing Rate:	96,000 BTU/hr	96,000 BTU/hr
min. press.:	4.5" W.C.	4.5" W.C.
max. press.:	11" W.C.	11" W.C.

Due to LoLo continuous product and value improvements, specifications are subject to change without notice.



LoLo Commercial Foodservice Cooking Equipment

5925 I-55 South, Byram, MS 39272

877.246.5656

www.getlolo.com

159752 Rev B Issued: 7/2012