

Model: \_\_\_\_\_

Item #: \_\_\_\_\_ Quantity: \_\_\_\_\_

Project: \_\_\_\_\_



**1800 or 2100 Series Available**  
(see reverse)

• **Interior:**

20 gauge 304 series stainless steel with 3/8" radius corners welded and sealed. Available in 8", 12" and 15" depth.

• **Cold Plate:**

Cast aluminum post mix plate with seven circuits. Plate is sealed into bottom. Each circuit is 5/16" OD stainless steel tubing. Two full with remainder to be half circuits. Bump and swedge fittings on ends.

• **Front Apron:**

22 gauge 304 series stainless steel clad over 20 gauge galvaneal.

• **Backsplash:**

22 gauge 304 series stainless steel.

• **Sides:**

20 gauge galvaneal.

• **Back and Bottom:**

20 gauge galvaneal.

• **Legs:**

1-5/8" tubular 16 gauge galvanized steel. Each leg to have grey plastic bullet foot.

• **Plumbing:**

1/2" IPS drain connection with cold plate (4" nipple provided).

1" IPS drain connection without cold plate.

**Accessories**

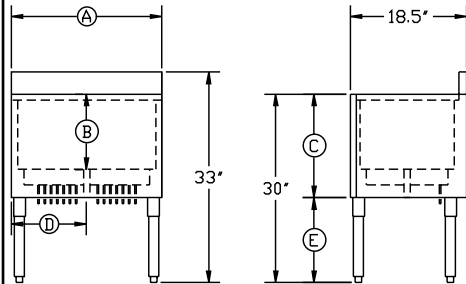
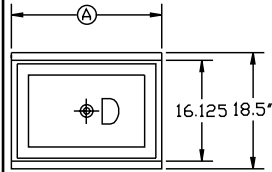
- Standard Single Tier Keyhole Speedrail (available sizes: 24", 30", 36", and 48")
- Standard Double Tier Keyhole Speedrail (available sizes: 24", 30", 36", and 48")
- Upgrade to Eight Circuit Cold Plate
- Stainless Steel Divider (specify ice bin model)
- Perforated bottom (on units without cold plates)
- Stainless Steel Sliding Cover (specify ice bin model and if bottle holders are bring used)
- Condiment Tray
- 3-Well Bottle Holder (two included with all ice bins)
- Stainless Steel Legs
- Additional Accessories (see Accessory Sheet)

Approved By: \_\_\_\_\_

Model: \_\_\_\_\_ Item #: \_\_\_\_\_ Quantity: \_\_\_\_\_ Project: \_\_\_\_\_

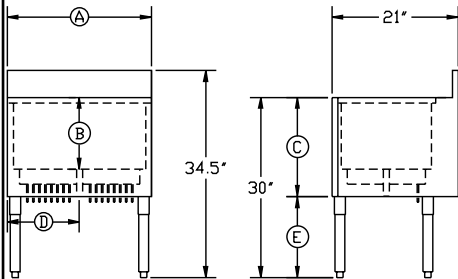
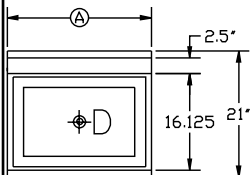
**Standard Series**

## 1800 Series



Model Numbers	Length (A)	Bin Depth (B)	Overall Depth (C)	Left Side to Drain (D)	Inside Bin. Dim.	Cold Plate Circuits	Ice Capacity lbs	Leg Size (E)	Weight lbs
1880	2'-0"	8"	9.5"	12"	15" x 22"	-	55	20"	45
1880-36	3'-0"	8"	9.5"	18"	15" x 34"	-	77	20"	70
1880-7	2'-0"	8"	12.5"	12"	15" x 22"	7	55	17"	80
1880-36-7	3'-0"	8"	12.5"	18"	15" x 34"	7	77	17"	105
18-24	2'-0"	12"	13.5"	12"	15" x 22"	-	80	16"	50
18-30	2'-6"	12"	13.5"	15"	15" x 28"	-	97	16"	65
18-36	3'-0"	12"	13.5"	18"	15" x 34"	-	115	16"	80
18-24-7	2'-0"	12"	16.5"	12"	15" x 22"	7	80	13"	85
18-30-7	2'-6"	12"	16.5"	15"	15" x 28"	7	97	13"	100
18-36-7	3'-0"	12"	16.5"	18"	15" x 34"	7	115	13"	115
18-24DP	2'-0"	15"	16.5"	12"	15" x 22"	-	100	13"	65
18-30DP	2'-6"	15"	16.5"	15"	15" x 28"	-	120	13"	80
18-36DP	3'-0"	15"	16.5"	18"	15" x 34"	-	138	13"	95
18-24DP-7	2'-0"	15"	19.5"	12"	15" x 22"	7	100	10"	100
18-30DP-7	2'-6"	15"	19.5"	15"	15" x 28"	7	120	10"	115
18-36DP-7	3'-0"	15"	19.5"	18"	15" x 34"	7	138	10"	130

## 2100 Series



Model Numbers	Length (A)	Bin Depth (B)	Overall Depth (C)	Left Side to Drain (D)	Inside Bin. Dim.	Cold Plate Circuits	Ice Capacity lbs	Leg Size (E)	Weight lbs
2180	2'-0"	8"	9.5"	12"	15" x 22"	-	55	20"	55
2180-36	3'-0"	8"	9.5"	18"	15" x 34"	-	77	20"	80
2180-7	2'-0"	8"	12.5"	12"	15" x 22"	7	55	17"	90
2180-36-7	3'-0"	8"	12.5"	18"	15" x 34"	7	77	17"	115
21-24	2'-0"	12"	13.5"	12"	15" x 22"	-	80	16"	60
21-30	2'-6"	12"	13.5"	15"	15" x 28"	-	97	16"	80
21-36	3'-0"	12"	13.5"	18"	15" x 34"	-	115	16"	100
21-24-7	2'-0"	12"	16.5"	12"	15" x 22"	7	80	13"	95
21-30-7	2'-6"	12"	16.5"	15"	15" x 28"	7	97	13"	115
21-36-7	3'-0"	12"	16.5"	18"	15" x 34"	7	115	13"	135
21-24DP	2'-0"	15"	16.5"	12"	15" x 22"	-	100	13"	75
21-30DP	2'-6"	15"	16.5"	15"	15" x 28"	-	120	13"	95
21-36DP	3'-0"	15"	16.5"	18"	15" x 34"	-	138	13"	115
21-24DP-7	2'-0"	15"	19.5"	12"	15" x 22"	7	100	10"	110
21-30DP-7	2'-6"	15"	19.5"	15"	15" x 28"	7	120	10"	130
21-36DP-7	3'-0"	15"	19.5"	18"	15" x 34"	7	138	10"	150

### Mechanical Requirements:

- 1" IPS Drain Connection without Cold Plate.
- 1/2" IPS Drain Connection with Cold Plate.

Approved By: \_\_\_\_\_

Due to our commitment to continued product improvement, specifications are subject to change without notice.