

# KM-2100/2500S\_H3

## 3 PHASE STACKABLE ICE CUBER

Item # \_\_\_\_\_

Project: \_\_\_\_\_

Qty: \_\_\_\_\_

\*AutoCad available on KCL

KM-2100/2500S\_H3

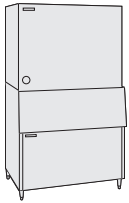
6/11

Item # 13246

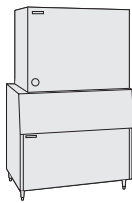
### CUBER DIMENSIONS

W x D x H

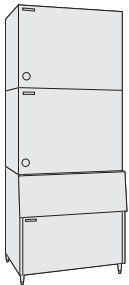
**KM-2100/2500S\_H3**  
48 x 27<sup>3/8</sup> x 36<sup>7/16</sup>



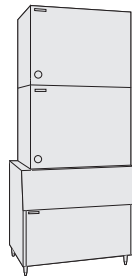
B-800



B-900



B-800



B-900



### KM-2100SWH3

Water-Cooled 3 Phase  
Shown on an optional  
B-900

### KM-2100SRH3

Remote Air-Cooled 3 Phase

### KM-2500SWH3

Water-Cooled 3 Phase

### KM-2500SRH3

Remote Air-Cooled 3 Phase




### KM-2100S\_H3

- Up to 2096 lbs. of ice production per 24 hours
- Stackable for 4192 lbs. per 24 hour ice production in the same floor space

### KM-2500S\_H3

- Up to 2424 lbs. of ice production per 24 hours
- Stackable for 4848 lbs. per 24 hour ice production in the same floor space

### KM-2100S\_H3 & KM-2500S\_H3

- Durable stainless steel exterior
  - Protected by *H-GUARD Plus* Antimicrobial Agent 
  - CycleSaver® design 
  - EverCheck® alert system 
  - Individual crescent cube
  - Stainless steel evaporator
  - R-404A Refrigerant
- \* The KM-2100SRH3 and KM-2500SRH3 are ENERGY STAR qualified.

Also available on Large Bins:

B-1150SS  
B-1300SS  
B-1500SS  
B-1650SS



15370001-15371402

### Warranty

Valid in United States, Canada, Puerto Rico, & U.S. Territories. Contact factory for warranty in other countries.

**Three Year** - Parts & Labor on entire machine.

**Five Year** - Parts & Labor on: Evaporator.

**Five Year** - Parts on: Compressor, air-cooled condenser coil.



# KM-2100/2500S\_H3 3 PHASE STACKABLE ICE CUBER

**DIMENSIONS**  
W x D x H  
**KM-2100S\_H3**  
48 x 27<sup>3/8</sup> x 36<sup>7/16</sup>  
**KM-2500S\_H3**  
48 x 27<sup>3/8</sup> x 36<sup>7/16</sup>

## STACKABLE ICE CUBER

- Water-cooled 3 phase / Remote Air-cooled 3 phase
- Water-cooled 3 phase / Remote Air-cooled 3 phase

### KM-2100 WATER - COOLED 3 PHASE

|                 |     |      |      |
|-----------------|-----|------|------|
| Water Temp ° F. | 50° | 70°  | 90°  |
| Air Temp ° F.   | 70° | 2096 | 2083 |
|                 | 80° | 2086 | 2065 |
|                 | 90° | 2083 | 2050 |

### KM-2100 REMOTE AIR - COOLED 3 PHASE

|                 |     |      |      |
|-----------------|-----|------|------|
| Water Temp ° F. | 50° | 70°  | 90°  |
| Air Temp ° F.   | 70° | 2034 | 1968 |
|                 | 80° | 1984 | 1882 |
|                 | 90° | 1968 | 1810 |

### KM-2500 WATER - COOLED 3 PHASE

|                 |     |      |      |
|-----------------|-----|------|------|
| Water Temp ° F. | 50° | 70°  | 90°  |
| Air Temp ° F.   | 70° | 2408 | 2395 |
|                 | 80° | 2398 | 2379 |
|                 | 90° | 2395 | 2365 |

### KM-2500 REMOTE AIR - COOLED 3 PHASE

|                 |     |      |      |
|-----------------|-----|------|------|
| Water Temp ° F. | 50° | 70°  | 90°  |
| Air Temp ° F.   | 70° | 2424 | 2373 |
|                 | 80° | 2385 | 2306 |
|                 | 90° | 2373 | 2250 |

### UTILITY CONSUMPTION

| Model Number | Ice Production Per Cycle<br>Lbs. Cubes | KWH per 100 LBS. | Potable Water Gal. per 100 lbs. | Condenser Water Gal. per 100 lbs. |
|--------------|--|------------------|---------------------------------|-----------------------------------|
| KM-2100SWH3  | 46.8 2160                              | 3.35             | 20.0                            | 95                                |
| KM-2100SRH3  | 46.8 2160                              | 4.26             | 21.1                            | N/A                               |
| KM-2500SWH3  | 46.3 2160                              | 3.78             | 19.4                            | 101                               |
| KM-2500SRH3  | 46.1 2160                              | 4.50             | 18.6                            | N/A                               |

### SPECIFICATIONS

| Model Number | Condenser         | Amperage | Min. Circuit Ampacity | Shipping Weight |
|--------------|-------------------|----------|-----------------------|-----------------|
| KM-2100SWH3  | Water-Cooled      | 10.5     | 20                    | 440 lbs.        |
| KM-2100SRH3  | Remote Air-Cooled | 12.5     | 20                    | 440 lbs.        |
| KM-2500SWH3  | Water-Cooled      | 14.2     | 30                    | 415 lbs.        |
| KM-2500SRH3  | Remote Air-Cooled | 17.7     | 30                    | 440 lbs.        |

### STORAGE BINS

| Model Number | Application Capacity | ARI-Rated Capacity |
|--------------|----------------------|--------------------|
| B-800        | 800 lbs.             | 600 lbs.           |
| B-900        | 900 lbs.             | 660 lbs.           |
| B-1150       | 1150 lbs.            | N/A                |
| B-1300       | 1275 lbs.            | N/A                |
| B-1500       | 1490 lbs.            | N/A                |
| B-1650       | 1605 lbs.            | N/A                |

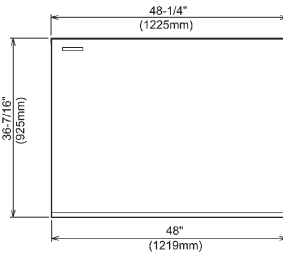
### ELECTRICAL & PLUMBING/KM-2100/2500S\_H3

- 208 - 230V/60/3
- 20 amp Max Fuse (30 amp Max Fuse - KM-2500) HACR breaker size
- 1/2" FPT copper or equivalent independent potable water supply
- 3/4" FPT independent drain connection

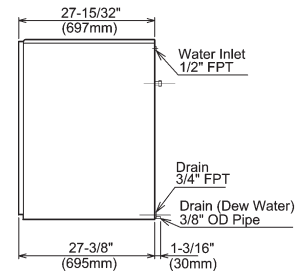


© HOSHIZAKI AMERICA, INC.

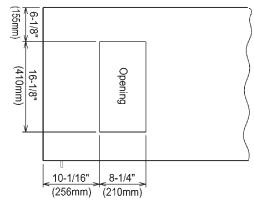
618 Hwy. 74 S., Peachtree City, GA 30269



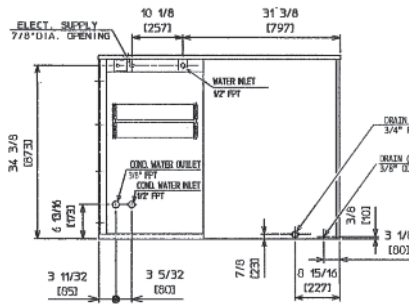
FRONT VIEW - KM-2100/2500



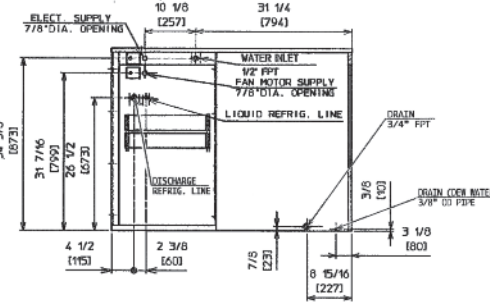
SIDE VIEW - KM-2100/2500



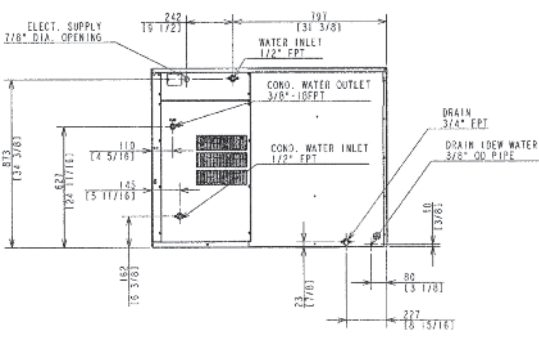
ICE DROP ZONE  
(BOTTOM VIEW - KM-2100/2500)



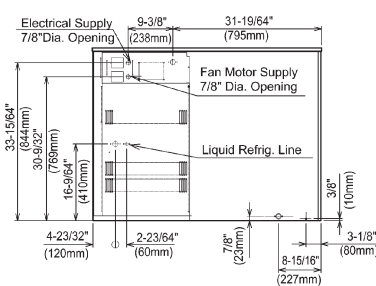
WATER-COOLED UNIT  
(REAR VIEW - KM-2100SWH3)



REMOTE AIR-COOLED UNIT  
(REAR VIEW - KM-2100SRH3)

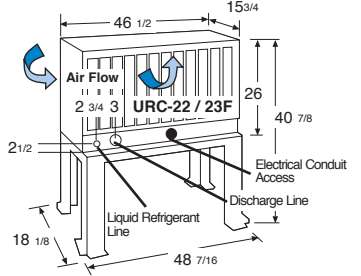


WATER-COOLED UNIT  
(REAR VIEW - KM-2500SWH3)



REMOTE AIR-COOLED UNIT  
(REAR VIEW - KM-2500SRH3)

URC-22 & 23F Remote Condenser (Sold Separately)  
For Use with KM-2100SRH3 & KM-2500SRH3



Voltage supply for the URC Remote Condenser is supplied from the Ice Maker. No additional circuit is required.

Pre-Charged Tubing Kits (Sold Separately)

- 20' R404A-20610-2
- 35' R404A-35610-2
- 55' R404A-55610-2

### OPERATING LIMITS

- Ambient Temp Range 45 - 100°F
- Water Temp Range 45 - 90°F
- Water Pressure 10 - 113psig
- Voltage Range 187 - 253V

### CONDENSING UNIT

- Voltage Range 104 - 127V
- Ambient Temp Range -20 - 122°F

### SERVICE

- Panels easily removed and all components accessible for service.

TEL 1-800-438-6087

FAX 1-800-345-1325

www.hoshizaki.com

Printed in U.S.A.

