

Project _____

Item # _____

Quantity _____



GLOBE FOOD EQUIPMENT COMPANY

Roller Grills

RG30 / RG50



RG30



Roller Grills

Globe Countertop Equipment

Models

- RG30 Roller Grill
- RG50 Roller Grill

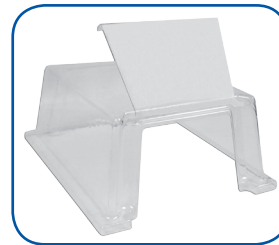


Standard Features

- Available in 30 and 50 dog units
- 11 chrome plated rollers
- Stainless steel construction
- Separate temperature controls for front and back rollers
- Individual heating element within each roller
- Individual 360° roller rotation
- Removable, easy-to-clean, stainless steel catch tray
- Separate ON/OFF switch
- Non-slip rubber feet
- Attached 4-foot power cord and plug
- Optional accessory - Polycarbonate sneeze cover

Optional Accessories

(Sold Separately)



- SN30 Sneeze Cover for 30"
- SN50 Sneeze Cover for 50"

Applications

- Cooks hot dogs, bratwursts, and sausages

Warranty

- One-year parts and labor

Product Capacity

- Model: RG30 - Capacity = 30
- Model: RG50 - Capacity = 50

Approved By: _____

Date: _____



GLOBE FOOD EQUIPMENT COMPANY

www.globeslicers.com

2153 Dryden Rd.
 Dayton, OH 45439
 Phone: 937-299-5493
 Phone: 800-347-5423
 Fax: 937-299-4147



Roller Grills

RG30 / RG50

Specifications

Electrical: Attached 4-foot flexible, three-wire cord with ground plug (NEMA 5-15).

RG30: 120V/1430W/11.9amps

RG50: 120V/1760W/14.7amps

Roller Grill Cooking Space:

RG30: grill area 19.4" x 17"
(49.3 cm x 43.9 cm)

RG50: grill area 31.2" x 17"
(79.2 cm x 43.9 cm)

Thermostat: The temperature is thermostatically controlled.

Consistent Heating: Roller grill will maintain a consistent selected temperature to ensure product consistency.

Standard Equipment: Standard equipment includes the roller grill and easy-to-remove catch tray.

Optional Equipment: SN30 and SN50 sneeze cover. Required in most states.

Catch Tray: Continuously collects grease and crumbs while cooking on the roller grill.

RG30 Dimensions:

Foot Print = 20.5" x 23.6"
(52.1 cm x 62.5 cm)
Overall Length = 20.5" (52.1 cm)
Overall Width = 23.6" (59.9 cm)
Overall Height = 13.1" (33.3 cm)

RG50 Dimensions:

Foot Print = 20.5" x 35.4"
(52.1 cm x 89.9 cm)
Overall Length = 20.5" (52.1 cm)
Overall Width = 35.4" (89.9 cm)
Overall Height = 13.1" (33.3 cm)

RG30 Shipping Information:

Net Weight: 40 lbs (18.1 kg)
Shipping Weight: 44 lbs (20.3 kg)

RG30 Shipping Dimensions:

26.8"W x 25.6"D x 17.4"H
(68 cm x 65 cm x 44 cm)

RG50 Shipping Information:

Net Weight: 54.01 lbs (24.5 kg)
Shipping Weight: 60.63 lbs (27.5 kg)

RG50 Shipping Dimensions:

38.6"W x 25.6"D x 17.4"H
(98 cm x 65 cm x 44 cm)

SN30 Shipping Information:

Net Weight: 4.23 lbs (1.9 kg)
Shipping Weight: 7.1 lbs (3.3 kg)

SN30 Shipping Dimensions:

21.5"W x 9.25"D x 24.6"H
(54.7 cm x 23.5 cm x 62.5 cm)

SN50 Shipping Information:

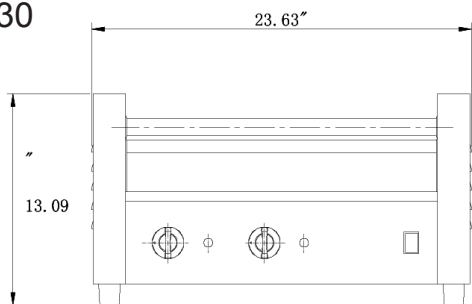
Net Weight: 6.3 lbs (2.9 kg)
Shipping Weight: 10.27 lbs (4.7 kg)

SN50 Shipping Dimensions:

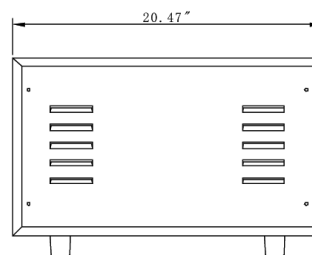
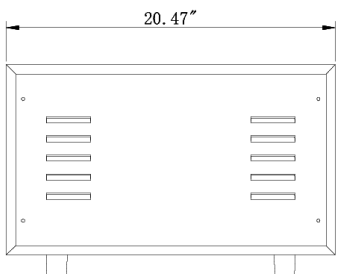
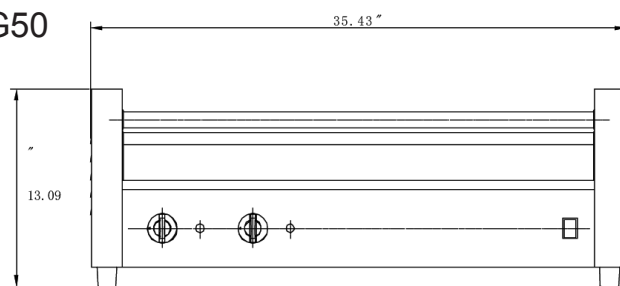
21.5"W x 9.25"D x 36.4"H
(54.7 cm x 23.5 cm x 92.5 cm)

Cartons are reinforced for shipping. The weight and dimensions of this reinforced carton are included above and may vary from shipment to shipment.

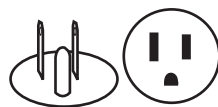
RG30



RG50



Plug Type - NEMA 5-15



GLOBE FOOD EQUIPMENT COMPANY

www.globeslicers.com

2153 Dryden Rd.
Dayton, OH 45439
Phone: 937-299-5493
Phone: 800-347-5423
Fax: 937-299-4147

Printed in U.S.A. 2-2011

Specifications are subject to change without notice.