



PROJECT:

MODEL:

QUANTITY:

ITEM NO:

MOBILE BARS & BACK-UP

For Conventional Beverage Service Using Cans and Bottles

PROFESSIONAL "CB SERIES"

Professional Series

LAMINATE EXTERIOR

Exterior with Stainless Steel Working Side



CB-88



CB-88

 IC-222
Ice Storage Cart


**Built to serve as the
"Toughest Bar In Town"!**

FWE's conventional "Professional Series" Mobile Bars are built tough to stand up under years of hard service. The acknowledged favorite of leading Hotels, Clubs and Convention Centers, FWE Mobile Bars increase profits and give any operation a polished look. The sanitary stainless steel work areas and interior make clean-up quick and easy. Built tough to stand up under years of continuous use, our top and bottom, precision welded tubular base frames prevent sagging or twisting.

The sleek black top and the Walnut, Oak, Black, or Cherry laminate exterior finishes are standard* with optional laminate selections available to meet your special decor. Custom laminates are available to enhance or match existing colors at most any establishment. Back up your bar service with a matching back bar and ice cart, which are perfect companions to any FWE mobile bar. For years of reliable, profitable service, ask for FWE "Prestige Series" - the "Toughest Bar in Town".

**WALNUT laminate exterior will be provided unless one of the other finishes has been specified.*

- ◇ Welded steel top and bottom frames
- ◇ Raised marine front edge retard spills
- ◇ Rugged polyurethane tire casters
- ◇ Stainless steel work surface and splash area with coved corners
- ◇ Stainless steel ice sink with shut-off drain valve
- ◇ Walnut laminate exterior finish*
- ◇ Black laminate top with bull-nose rounded corners
- ◇ Removable bottle speed rack
- ◇ Handy underbar server with 4 bowls
- ◇ Towel ring
- ◇ Large storage areas
- ◇ Two year limited warranty

Specify Laminate Exterior at time of order:

Walnut* Oak Black Cherry Custom



TM



PROJECT:

MODEL:

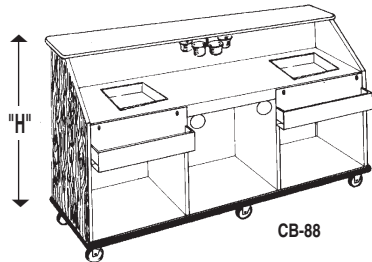
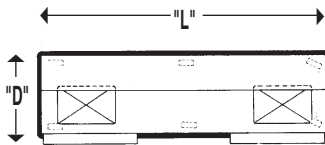
QUANTITY:

ITEM NO:

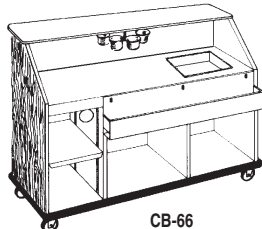
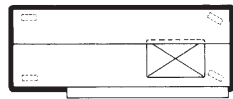
SPECIFICATIONS:

PROFESSIONAL "CB SERIES" BARS

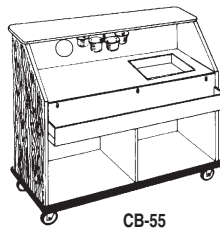
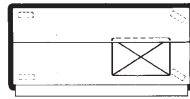
available with matching Back-Up Bar and Ice Cart



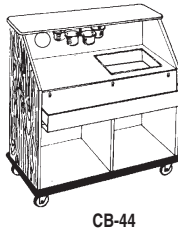
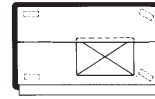
CB-88



CB-66



CB-55



CB-44



ICE STORAGE CART
IC-222

Holds 200 lbs. of ice!
Fully insulated. Flip-top stainless lid. Drain, push bar handle, and all swivel 5" casters. Welded steel frame.



BACK BAR
PSC-44

Enclosed on 3-sides!
Stores glasses and bar accessories. Convenient work/serve black top. Stainless steel interior shelves on 9.5", 11.5", and 14" spacings. Welded steel frame. 5" casters.

MODEL NUMBER	OVERALL EXTERIOR DIMENSIONS IN. (mm)			WORKING AREA HEIGHT	BULK STORAGE AREA	BOTTLE RACK CAPACITY [A]	CASTER SIZE	SHIP WT. LBS. (KG)
	HIGH "H"	DEEP "D" [A]	LONG "L"					
CB-4 (Without Bumper)	45.5" (1156)	26.5" (673)	48" (1219)	35.5" (902)	27" H x 23" D	10 qts	5"	295 (134)
CB-44 with Full Bumper	45.5" (1156)	28.5" (724)	50" (1270)	35.5" (902)	27" H x 23" D	10 qts	5"	315 (134)
CB-5 (Without Bumper)	45.5" (1156)	26.5" (673)	60" (1524)	35.5" (902)	27" H x 23" D	12 qts	5"	480 (218)
CB-55 with Full Bumper	45.5" (1156)	28.5" (724)	62" (1575)	35.5" (902)	27" H x 23" D	12 qts	5"	500 (227)
CB-6 (Without Bumper)	45.5" (1156)	26.5" (673)	72" (1829)	35.5" (902)	27" H x 23" D	12 qts	5"	555 (252)
CB-66 with Full Bumper	45.5" (1156)	28.5" (724)	74" (1880)	35.5" (902)	27" H x 23" D	12 qts	5"	575 (261)
CB-8 (Without Bumper)	45.5" (1156)	26.5" (673)	96" (2438)	35.5" (902)	27" H x 23" D	16 qts	5"	600 (272)
CB-88 with Full Bumper	45.5" (1156)	28.5" (724)	98" (2489)	35.5" (902)	27" H x 23" D	16 qts	5"	620 (281)

Consult Factory for SHIPPING CLASS

[A] Removable bottle speed rack extends 3-1/2" beyond depth dimension.

Note: Can be provided with Cold Plate.

MATCHING MOBILE ICE CART SPECIFICATIONS

MODEL NUMBER	OVERALL EXTERIOR DIMENSIONS IN. (mm)			ICE TANK CAPACITY	CASTER SIZE	SHIP WT. LBS. (KG)
	HIGH "H"	DEEP "D"	LONG "L"			
IC-200 (Without Bumper)	33.5" (1156)	24.5" (648)	24.5" (648)	200 lbs	5"	140 (64)
IC-222 with Full Bumper	33.5" (1156)	26.5" (673)	26.5" (673)	200 lbs	5"	150 (68)

MATCHING MOBILE BACK BAR SPECIFICATIONS

MODEL NUMBER	OVERALL EXTERIOR DIMENSIONS IN. (mm)			CASTER SIZE	SHIP WT. LBS. (KG)
	HIGH "H"	DEEP "D"	LONG "L"		
PSC-4 (Without Bumper)	45.5" (1156)	26.5" (673)	48" (1219)	5"	175 (79)
PSC-44 with Full Bumper	45.5" (1156)	28.5" (724)	50" (1270)	5"	190 (86)

Specify Laminate Exterior at time of order:

Walnut Oak Black Cherry Custom

Walnut will be furnished standard (default) unless one of the other colors are specified.

CONSTRUCTION. Heliarc welded, single unit construction shall consist of welded stainless steel base frame of heavy gauge 1" square stainless steel tubing with extra 10-gauge stainless steel caster corner plate reinforcements.

BODY / TOP MATERIALS. Front and side panels shall be high-pressure, dual-side counter-balanced laminate .75" thick in Walnut finish. Walnut, Oak, Black, or Cherry laminate finishes are standard. Walnut will be furnished standard (default) unless one of the other colors are specified. A full range of additional laminate selections are available. Full length, heavy gauge stainless steel angles reinforce front corners of body on inside, with high impact edging on outside corners. Work surface shall be constructed of 20-gauge stainless steel. Interior of body shall be lined with 24-gauge stainless steel, bonded to cabinet walls and bottom storage area. Seams shall overlap for greater durability and moisture resistance.

Work and splash areas shall be polished stainless steel with easy-to-clean coved corners. Front edge shall have raised marine nosing to retard spills.

CASTERS. Maintenance free polyurethane tire casters in a configuration of two (2) rigid and two (2) swivel with brake. Casters shall have a reinforced yoke mounted to 10-gauge caster plate. The caster mounting plate shall be secured to a 10-gauge stainless steel reinforcing stress plate via welded in place stainless steel studs. The reinforcing stress plates shall be welded to the heavy gauge tubular frame of the unit. Eight (8) foot models are equipped with six (6) casters: four (4) rigid casters and two (2) swivel with brake.

BUMPERS. Full bumper models shall have solid 1.5" wide continuous wraparound aluminum channel, bolted to frame, with snap-in, non-marking replaceable vinyl cushion.

Full perimeter bumper shall be continuous, for added protection, with corner cut-outs to facilitate cleaning.

STORAGE AREA. On six (6) foot models, the glass storage area shall include removable and adjustable stainless steel shelf. On all models, the bottom storage area shall be stainless steel lined.

ICE SINK. Sink shall be one-piece stainless steel with coved corners: 19.75" x 12.75" x 10.5" deep. Sink shall have enclosed foam insulation with drain. Sink shall have a capacity of 60 lbs. of ice, and be provided with a stainless steel sliding cover.

BAR ACCESSORIES. Standard equipment shall include 5" deep, heavy gauge stainless steel bottle speed rack extending 3.5" beyond depth dimension of 31.5"; removable without tools. Underbar server shall have four (4) removable condiment holders. Towel ring shall be provided under top work surface.

Optional Accessories:

- Locking bottle speed rack
- Extra stainless steel shelves
- Locking doors for shelf area
- Stainless steel bar gutters
- Protective storage cover
- Floor locks (set of 2)
- All swivel casters
- All swivel with brake casters

FWE Products are used by major companies world-wide. We can modify, design, or custom build equipment to fit your special requirements.



Food Warming Equipment Company, Inc.

P.O. Box 1001
Crystal Lake, IL 60039 USA
800-222-4393; 815-459-7500
Fax: 815-459-7989

Manufacturing Facilities:
7900 S. Route 31
Crystal Lake, IL 60014 USA
www.FWE.com sales@fweco.net

FWE products may be covered under one or more of the following U.S. patents: 288,299;238,300;3,952,609;4,192,991.
All specifications subject to change without notice.
© 09 FWE Food Warming Equipment Company, Inc.