



ES10 Food Steamer
Model ES10T



*EmberGlo steamers
bring out the freshness
of your food.*

3. Easy To Maintain

Because ES10 steamers use regular tap water, there is no need for demineralization or special cleaning solutions. Maintenance of the water nozzle is accomplished with the included stainless steel cleaning spring.

Specialized Features

Type: Adjustable hinged top opening
 Food Pan: 4" deep, full size
 Tap water operation - Direct water hookup
 No Hood System needed
 Quick connect fittings
 Electrical:
 240V, 3200 watts, 13.3 amps, single phase or
 208V, 2400 watts, 11.6 amps, single phase

ES10T

Automatic timer control, with audible signal
 Optional push button operation

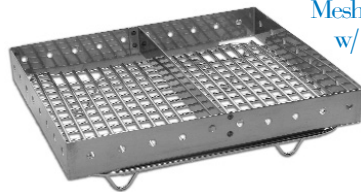
ES10PB

Push button operation

Tortilla Rack
5608-71



Mesh Food Pan
w/ Separator
5608-53



Steamer - Generator
Cleaning Brush
8450-62

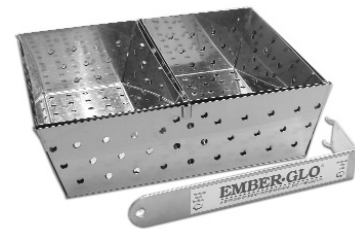


Egg Poacher
5608-61



Accessories for ES10 Series

Item Descriptions	Part Number	Dimensions	Shipping Weight
Tortilla Rack w/ Handle	5608-71	10 1/4"L x 7 5/8"W x 3 1/4"H	1 lb
Mesh Food Pan Grid & Separator	5608-53	10 1/8"L x 8 5/8"W x 3"H	1 1/8 lb
Three in One Basket Set w/ Handle	5608-70	10 3/8"L x 8 1/8"W x 3"H	1 1/2 lb
1/2 Pan Size Basket w/ Handle	5608-72	10 3/8"L x 8 1/8"W x 3"H	1 3/4 lb
Two of 1/4 Pan Size Basket w/ Handle	5608-73	7 7/8"L x 5 1/8"W x 3"H	1 lb
Egg Poacher	5608-61	12 3/4"L x 10 1/2"W	4 lb
Steamer Generator Cleaning Brush	8450-62	7 3/4"L	1/2 lb



Half Pan Size Basket - 5608-72

Quarter Pan Size Basket (2 pk) - 5608-73

3 in One Basket Set (1 Half and 2 Quarters) - 5608-70
(Basket Sets come with a Handle)

Specifications

Model Number	Type	Dimensions	Electrical	Electrical Connection	Shipping Weight
ES10T	Food steamer/cooker with direct water hook-up, 6' hose with quick connect fittings, 20 minute timer, single-shot push button operation, with external user controls to customize steamer cycle and buzzer	22 1/2" Wide 20" Deep 29" High	240V, single phase protect 13.3 amps, 3200 watts; 208V, single phase protect 11.6 amps, 2400 watts	4 wire including ground and neutral with power cord twist lock plug and receptacle	73 lbs.
ES10PB	Food steamer with direct water hook-up, 6' hose with quick connect fittings, and push button operation	22 1/2" Wide 20" Deep 29" High	240V, single phase protect 13.3 amps, 3200 watts; 208V, single phase protect 11.6 amps, 2400 watts	4 wire including ground and neutral with power cord twist lock plug and receptacle	73 lbs.

All models contain 4" deep, full size food pan. All models have the same dimensions.
 For Export only: All models available for export with 240V-50Hz., 13.3 amps, 3200 watts. Export models shipped less cord and U.S. agency approvals.