



# "ESS" Stainless Steel Top Work Tables

w/ 16 Gauge Stainless Steel Work Top  
w/ Galvanized Base and Undershelf



16 GAUGE TOP w/ UNDERSHELF					
24"WIDE	Qty	30"WIDE	Qty	36"WIDE	Qty
ESS069		ESS075		-	
ESS070		ESS076		ESS081	
ESS071		ESS077		ESS082	
ESS072		ESS078		ESS083	
ESS072A		ESS078A		ESS083A	
ESS073		ESS079		ESS084	
ESS073A		ESS079A		ESS084A	
ESS074		ESS080		ESS085	

### FEATURES:

- \* 16 Gauge Stainless Steel Top  
Type 300 stainless steel with # 3 polish, satin finish
- \* Top is **Sound Deadened**
- \* Reinforced with 1"x2" channel running entire length of table
- \* 1 1/2" **Stallion Edge** on front and rear with side edges 90 degree bend down for table line-up
- \* Galvanized Base and Undershelf
- \* Undershelf is secured in a fixed position, 12" above floor
- \* Adjustable bullet feet
- \* Shipped knocked-down, easy - to - assemble
- \* Optional drawers, casters, pot racks, etc. available
- \* All models are approved by the National Sanitation Foundation and the U.S. Department of Agriculture.

### CONSTRUCTION:

Top: Stainless Steel Tops are TIG welded, Exposed welds are polished to match adjacent surface.

### MATERIAL:

Top: 16 gauge stainless Steel  
Type 300 stainless steel with # 3 polish, satin finish

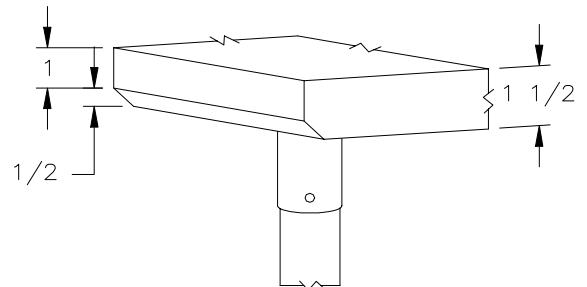
Shelf: 18 gauge Galvanized Steel  
\*\* 6 ft. table only, 16 gauge galvanized steel

Legs: 1 5/8" Round O.D., 16 gauge tubular galvanized steel

Gussets: Galvanized Steel

Feet: 1" adjustable galvanized bullet feet

Note: "ESS" standard w/stallion edge front and rear.  
For 1 1/2" backsplash, use prefix "U" I.E. UESS069, same price.



STALLION  
SAFETY  
EDGE

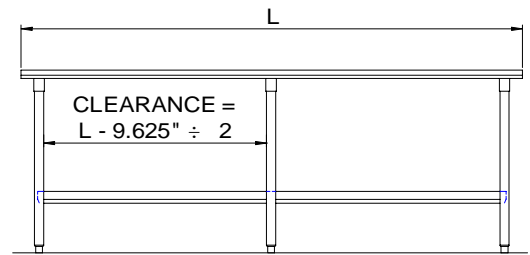
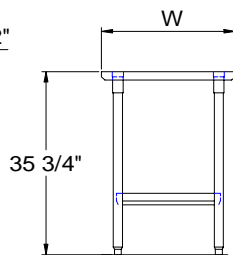
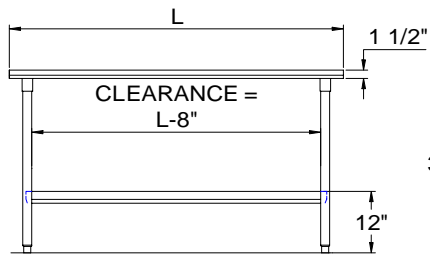
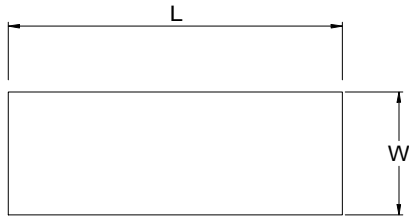
### OPTIONAL ACCESSORIES

	MODEL #	Qty
DRAWER		
DRAWER LOCK		
ADJUSTABLE SHELF		
CASTERS		
OVERSHELVES		
SINKS		
POT RACK		
WELDED SET-UP		

## John Boos & Co

315 South First Street - Effingham, IL 62401  
Phone: 217-347-7701 - Fax: 217-347-7705  
Email: sales@johnboos.com - Web-site: www. johnboos.com

## DETAILED SPECIFICATIONS



All units ship unassembled for reduced shipping cost.  
 Units 7 ft. and larger are furnished with six legs.  
 All dimensions are typical.  
 Tolerance +/- .500".

Finished size of undershelf.  
 Shelf length = length minus 4.875"  
 Shelf width = width minus 4.25"

### 16 GAUGE TOP & UNDERSHELF

L	24" WIDE	WT.	30" WIDE	WT.	36" WIDE	WT.
36	ESS069	52	ESS075	59	-	-
48	ESS070	64	ESS076	76	ESS081	82
60	ESS071	76	ESS077	92	ESS082	98
72	ESS072	97	ESS078	111	ESS083	144
84	ESS072A	108	ESS078A	125	ESS083A	135
96	ESS073	118	ESS079	139	ESS084	155
108	ESS073A	130	ESS079A	153	ESS084A	171
120	ESS074	142	ESS080	167	ESS085	187

### John Boos & Co

315 South First - Effingham, IL 62401 Phone: 217-347-7701 - Fax: 217-347-7705  
 Email: sales@johnboos.com - Web-site: www.johnboos.com



March 2009

John Boos is constantly engaged in a program of improving products and therefore reserves the right to change specification without prior notice