

Camshelving® Elements Series

4-Shelf Starter Units for Stationary Units

Shelf Plates only with Camguard® antimicrobial

3 Post Heights

64" (1630 mm), 72" (1830 mm), 84" (2140 mm)

3 Shelf Widths

18" (460 mm), 21" (540 mm), 24" (610 mm)

5 Shelf Lengths

36" (910 mm), 42" (1070 mm), 48" (1220 mm),

54" (1380 mm), 60" (1530 mm)



• Starter Unit includes:

4 stationary posts with leveling feet installed pre-assembled with post connectors and wedges, 1 bag of 32 stationary traverse dovetails (16 ea. A and B), Vented shelf plates (for 4 shelves), 8 stationary traverses and instructions.

Features & Benefits

Strong Technology

Posts and Traverses are built using advanced manufacturing technology and the use of a non-corrosive composite material. The robust design along with unique composite material gives Elements an unprecedented longevity, durability and weight-bearing capacity in the industry. Shelves up 48" (1220 mm) long hold up to 800 lbs. (363 kg) evenly distributed static weight. Shelves 54" – 78" (1380 mm – 1980 mm) long hold up to 600 lbs. (272 kg) each. Shelves connected by Corner Connectors hold up to 400 lbs. (182 kg) on a 36" (910 mm) to 48" (1220 mm) traverse.

Hygienic Design

Camshelving Shelf Plates contain Camguard® antimicrobial, a silver-ion technology that inhibits the growth of mold, fungus and bacteria that may cause odors, stains and product degradation. Camguard is incorporated throughout the shelf plate material so that it will never wash off or wear out. The shelf plates remove easily and can be placed in an open end Camrack® (OETR314) for washing.

Shelving for Life

Non-corrosive design will endure all areas of operation, dry-storage, coolers, warewashing, freezer and heavy condensation and humidity settings without risk of rusting, peeling, denting, cracking or warping. Functions in temperatures down to -36°F (-30°C) or warm environments up to 190°F (88°C).

Fits in Any Space

Innovative design helps maximize on valuable space and provides strength and stability. Straight line components are attached by sharing posts of existing units with no loss of weight-bearing capacity. Corner Connectors bring units together in 90° angle to create corner & U-shaped units. Reduces costs by sharing posts of existing unit without the use of add-on clips or "S" hooks.

Requires minimal assembly

Can be put together with the use of a rubber mallet. Two-piece dovetails secure Traverses so they can be set easily into place.

Flexible Design

Shelves can be easily adjusted at 4" (102 mm) increments. Add a shelf to an existing unit by simply ordering the appropriate Shelf Kit. Adjustable foot on bottom of each stationary Post adjusts easily for floor irregularities so shelf contents are securely stored and leveled.

Optional Accessories

Includes Wall Fastener and Seismic Foot. Each are packed 4 per case. Identification Tags clip easily onto traverses.

Item No. _____

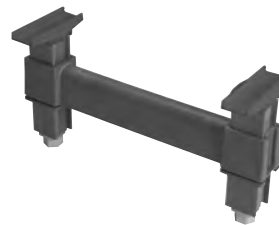
Specifier Identification No. _____

Model No. _____

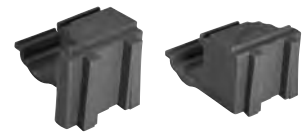
Quantity _____



Four Shelf Unit with Vented Shelf Plates.



Dunnage Stand Recommended for Units 54" (1380 mm) or longer.



Set of Left and Right Corner Connectors (1 set required per shelf).

Approvals



Components

* Does not include Wall Fastener and Seismic Foot.

Camshelving® Elements Series

4-Shelf Starter Units for Stationary Units Shelf Plates only with Camguard® antimicrobial

Item No. _____

Specifier Identification No. _____

Model No. _____

Quantity _____

Four shelf Starter Unit

CODE	TRAVERSE IN. MM	CASE LBS. (CUBE)	CASE KG. (CUBE M ³)
64" (1630 mm) Height 18" (460 mm) Width			
ESU183664	36" 910 mm	49.99 (5.92)	22,68 (0,17)
ESU184264	42" 1070 mm	54.53 (5.92)	24,74 (0,17)
ESU184864	48" 1220 mm	58.94 (5.92)	26,74 (0,17)
ESU185464	54" 1380 mm	63.64 (5.92)	28,87 (0,17)
ESU186064	60" 1530 mm	68.26 (5.92)	30,96 (0,17)

CODE	TRAVERSE IN. MM	CASE LBS. (CUBE)	CASE KG. (CUBE M ³)
64" (1630 mm) Height 21" (540 mm) Width			
ESU213664	36" 910 mm	54.94 (7.39)	24,92 (0,21)
ESU214264	42" 1070 mm	60.23 (7.39)	27,32 (0,21)
ESU214864	48" 1220 mm	65.29 (7.39)	29,61 (0,21)
ESU215464	54" 1380 mm	70.74 (7.39)	32,09 (0,21)
ESU216064	60" 1530 mm	76.11 (7.39)	34,52 (0,21)

CODE	TRAVERSE IN. MM	CASE LBS. (CUBE)	CASE KG. (CUBE M ³)
64" (1630 mm) Height 24" (610 mm) Width			
ESU243664	36" 910 mm	59.50 (8.49)	26,99 (0,24)
ESU244264	42" 1070 mm	61.66 (8.49)	27,97 (0,24)
ESU244864	48" 1220 mm	71.72 (8.49)	32,53 (0,24)
ESU285464	54" 1380 mm	77.70 (8.49)	35,24 (0,24)
ESU246064	60" 1530 mm	83.59 (9.46)	37,92 (0,27)

CODE	TRAVERSE IN. MM	CASE LBS. (CUBE)	CASE KG. (CUBE M ³)
84" (2140 mm) Height 24" (610 mm) Width			
ESU243684PKG	36" 910 mm	61.46 (14.29)	27,88 (0,40)
ESU244284PKG	42" 1070 mm	67.27 (15.56)	30,51 (0,44)
ESU244884PKG	48" 1220 mm	73.68 (12.56)	33,42 (0,36)
ESU245484PKG	54" 1380 mm	80.66 (14.59)	36,58 (0,41)
ESU246084PKG	60" 1530 mm	86.55 (15.13)	39,26 (0,43)

Due to the size of the 84" (2140 mm) shelving, starter units will be shipped in 3 cartons.

Corner Connector Set

CODE	DESCRIPTION	CASE LBS. (CUBE)	CASE KG. (CUBE M ³)
ECC	Right and Left	0.70 (0.4)	0,031 (0,001)

Case Pack: 1 set

Architect Specs

Posts:	Proprietary non-corrosive composite material.
Post Connectors:	Glass Filled Polypropylene.
Traverses:	Proprietary non-corrosive composite material.
Vented/Solid Shelf Plates:	Reinforced polypropylene with Camguard® antimicrobial.
Corner Connectors:	Glass Filled Polypropylene.
Adjustable Foot:	Glass Filled Nylon.
Seismic Foot:	Stainless Steel post and wide foot plate, 3 holes for bolts. (Bolts not provided)
Divider Bars:	Glass Filled Nylon.
Wall Fastener:	Stainless Steel.
Dovetails:	Resin Nylon
Wedges:	Resin Polypropylene

CODE	TRAVERSE IN. MM	CASE LBS. (CUBE)	CASE KG. (CUBE M ³)
72" (1830 mm) Height 18" (460 mm) Width			
ESU183672	36" 910 mm	51.27 (5.92)	23,26 (0,17)
ESU184272	42" 1070 mm	55.81 (5.92)	25,32 (0,17)
ESU184872	48" 1220 mm	60.22 (5.92)	27,32 (0,17)
ESU185472	54" 1380 mm	64.92 (5.92)	29,45 (0,17)
ESU186072	60" 1530 mm	69.54 (5.92)	31,54 (0,17)

CODE	TRAVERSE IN. MM	CASE LBS. (CUBE)	CASE KG. (CUBE M ³)
72" (1830 mm) Height 21" (540 mm) Width			
ESU213672	36" 910 mm	56.22 (7.39)	25,50 (0,21)
ESU214272	42" 1070 mm	61.51 (7.39)	27,90 (0,21)
ESU214872	48" 1220 mm	66.57 (7.39)	30,20 (0,21)
ESU215472	54" 1380 mm	72.02 (7.39)	32,67 (0,21)
ESU216072	60" 1530 mm	77.39 (7.39)	35,10 (0,21)

CODE	TRAVERSE IN. MM	CASE LBS. (CUBE)	CASE KG. (CUBE M ³)
72" (1830 mm) Height 24" (610 mm) Width			
ESU243672	36" 910 mm	60.78 (8.49)	27,57 (0,24)
ESU244272	42" 1070 mm	66.59 (8.49)	30,21 (0,24)
ESU244872	48" 1220 mm	72.99 (8.49)	33,11 (0,24)
ESU245472	54" 1380 mm	79.98 (8.49)	35,82 (0,24)
ESU246072	60" 1530 mm	84.87 (9.46)	38,50 (0,27)

Dunnage Stands

CODE	WIDTH IN. MM	CASE LBS. (CUBE)	CASE KG. (CUBE M ³)
6 1/2" (165 mm) Height			
EDS14	14" 360 mm	1.94 (0.18)	0,88 (0,01)
EDS18	18" 460 mm	2.05 (0.22)	0,93 (0,01)
EDS21	21" 540 mm	2.13 (0.26)	0,96 (0,01)
EDS24	24" 610 mm	2.22 (0.30)	1,01 (0,01)

Case Pack: 1

Optional Accessories

Seismic Foot (Bolts not provided)	<input type="checkbox"/> CSEQ3	Color: Silver	Case pack: 4 each
Wall Fastener	<input type="checkbox"/> EWF	Color: Silver	Case pack: 4 each
E Corner Connector	<input type="checkbox"/> ECC	Color: Brushed Graphite	Case pack: 2 each
Identification Tag 6"	<input type="checkbox"/> CSID	Color: White/Clear	Case pack: 12 each
Identification Tag 3"	<input type="checkbox"/> CSID3	Color: White/Clear	Case pack: 12 each

Standard Colors

Brushed Graphite (580)

Approvals



* Does not include Wall Fastener and Seismic Foot.



© Cambro Manufacturing Company 5801 Skylab Road, Huntington Beach, CA 92647-2056, U.S.A.
Telephone 714 848 1555 Toll Free 800 854 7631 Customer Service 800 833 3003