



# STAINLESS STEEL ECONOMY WORK TABLES



Stainless Steel Bullet Feet standard on SLAG, MSLAG, SFLAG & KSLAG Series



Plastic Bullet Feet standard on ELAG, FLAG & KLAG Series



ELAG & FLAG Series Flat Top



MSLAG, SLAG & SFLAG Series 1 1/2" Backsplash



KLAG & KSLAG Series 5" Backsplash

Item #: \_\_\_\_\_ Qty #: \_\_\_\_\_  
 Model #: \_\_\_\_\_  
 Project #: \_\_\_\_\_

## FEATURES:

**ELAG, SLAG & MSLAG** Top is furnished with 1 5/8" square bend on sides and 1 5/8" sanitary rolled rim on front and rear & square sides.

**FLAG & SFLAG** Top is furnished with 1 5/8" square bend on sides and 1 5/8" sanitary rolled rim on front and square sides, and 1 1/2" backsplash on rear.

**KLAG & KSLAG** Top is furnished with 1 5/8" square bend on sides and 1 5/8" sanitary rolled rim on front and square sides, and 5" backsplash on rear.

Two hat-channels stud welded under tabletop to reinforce and maintain a level work surface.

Aluminum die cast "leg-to-shelf" clamp secures shelf to leg eliminating unsightly nuts and bolts. Undershef is fully adjustable.

## CONSTRUCTION:

All TIG welded. Exposed weld areas polished to match adjacent surface.

Top is sound deadened.

Roll formed embossed galvanized hat channels are secured to top by means of structural adhesive and weld studs.

Gussets welded to support hat channels.

## MATERIAL:

### ELAG, FLAG & KLAG SERIES:

**TOP:** Heavy gauge stainless steel type "430" series.

**SHELF:** 18 gauge galvanized steel.

**LEGS:** 1 5/8" diameter tubular galvanized steel. Galvanized steel gussets. 1" adjustable plastic bullet feet.

### SLAG, SFLAG & KSLAG SERIES:

**TOP:** Heavy gauge stainless steel type "430" series.

**SHELF:** 18 gauge stainless steel.

**LEGS:** 1 5/8" diameter tubular stainless steel. Stainless steel gussets. 1" adjustable stainless steel bullet feet.

### MSLAG SERIES:

**TOP:** 16 gauge stainless steel type "304" series.

**SHELF:** 16 gauge stainless steel.

**LEGS:** 1 5/8" diameter tubular Stainless steel. Stainless steel gussets. 1" adjustable stainless steel bullet feet.

## ELAG & FLAG SERIES

W	L	Flat Top w/Undershef	WT.	1-1/2" Splash w/Undershef	WT.
24"	30"	ELAG-240	45 lbs.	FLAG-240	45 lbs.
	24"	ELAG-242	40 lbs.	FLAG-242	40 lbs.
	36"	ELAG-243	51 lbs.	FLAG-243	51 lbs.
	48"	ELAG-244	61 lbs.	FLAG-244	61 lbs.
	60"	ELAG-245	73 lbs.	FLAG-245	73 lbs.
	72"	ELAG-246	84 lbs.	FLAG-246	84 lbs.
30"	96"	ELAG-248	125 lbs.	FLAG-248	125 lbs.
	30"	ELAG-300	50 lbs.	FLAG-300	50 lbs.
	36"	ELAG-303	58 lbs.	FLAG-303	58 lbs.
30"	48"	ELAG-304	70 lbs.	FLAG-304	70 lbs.
	60"	ELAG-305	83 lbs.	FLAG-305	83 lbs.
	72"	ELAG-306	97 lbs.	FLAG-306	97 lbs.
	96"	ELAG-308	137 lbs.	FLAG-308	137 lbs.

## SLAG & SFLAG SERIES

W	L	Flat Top w/Undershef	WT.	1-1/2" Splash w/Undershef	WT.
24"	30"	SLAG-240	49 lbs.	SFLAG-240	49 lbs.
	24"	SLAG-242	31 lbs.	SFLAG-242	31 lbs.
	36"	SLAG-243	64 lbs.	SFLAG-243	64 lbs.
	48"	SLAG-244	69 lbs.	SFLAG-244	69 lbs.
	60"	SLAG-245	92 lbs.	SFLAG-245	92 lbs.
	72"	SLAG-246	109 lbs.	SFLAG-246	109 lbs.
30"	96"	SLAG-248	145 lbs.	SFLAG-248	145 lbs.
	30"	SLAG-300	50 lbs.	SFLAG-300	50 lbs.
	36"	SLAG-303	50 lbs.	SFLAG-303	50 lbs.
30"	48"	SLAG-304	70 lbs.	SFLAG-304	70 lbs.
	60"	SLAG-305	86 lbs.	SFLAG-305	86 lbs.
	72"	SLAG-306	97 lbs.	SFLAG-306	97 lbs.
	96"	SLAG-308	142 lbs.	SFLAG-308	142 lbs.

## 5" SPLASH KLAG SERIES

W	L	Flat Top w/Undershef	WT.
24"	36"	KLAG-243	54 lbs.
	48"	KLAG-244	65 lbs.
	60"	KLAG-245	76 lbs.
	72"	KLAG-246	89 lbs.
30"	96"	KLAG-248	123 lbs.
	24"	KLAG-302	59 lbs.
	36"	KLAG-303	62 lbs.
	48"	KLAG-304	73 lbs.
	60"	KLAG-305	87 lbs.
30"	72"	KLAG-306	102 lbs.
	96"	KLAG-308	142 lbs.

## 5" SPLASH KSLAG SERIES

W	L	5" Splash w/Undershef	WT.
24"	36"	KSLAG-243	54 lbs.
	48"	KSLAG-244	65 lbs.
	60"	KSLAG-245	76 lbs.
	72"	KSLAG-246	89 lbs.
30"	96"	KSLAG-248	123 lbs.
	24"	KSLAG-302	59 lbs.
	36"	KSLAG-303	62 lbs.
	48"	KSLAG-304	73 lbs.
	60"	KSLAG-305	87 lbs.
30"	72"	KSLAG-306	102 lbs.
	96"	KSLAG-308	142 lbs.

## MSLAG SERIES

W	L	Flat Top w/Undershef	WT.
30"	36"	MSLAG-303	65 lbs.
	48"	MSLAG-304	72 lbs.
	60"	MSLAG-305	89 lbs.
	72"	MSLAG-306	107 lbs.
	96"	MSLAG-308	166 lbs.



Customer Service Available To Assist You 1-800-645-3166 8:30 am - 8:00 pm E.S.T.

Email Orders To: customer@advancetabco.com. For Smart Fabrication™ Quotes, Email To: smartfab@advancetabco.com or Fax To: 631-586-2933

**NEW YORK**  
Fax: (631) 242-6900

**GEORGIA**  
Fax: (770) 775-5625

**TEXAS**  
Fax: (972) 932-4795

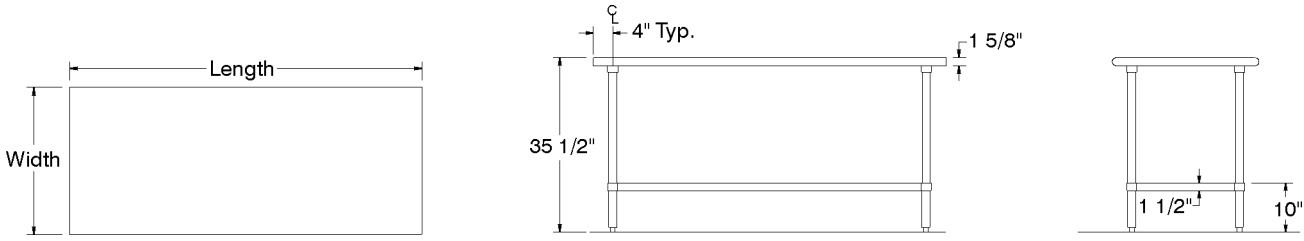
**NEVADA**  
Fax: (775) 972-1578

# DETAILS and SPECIFICATIONS

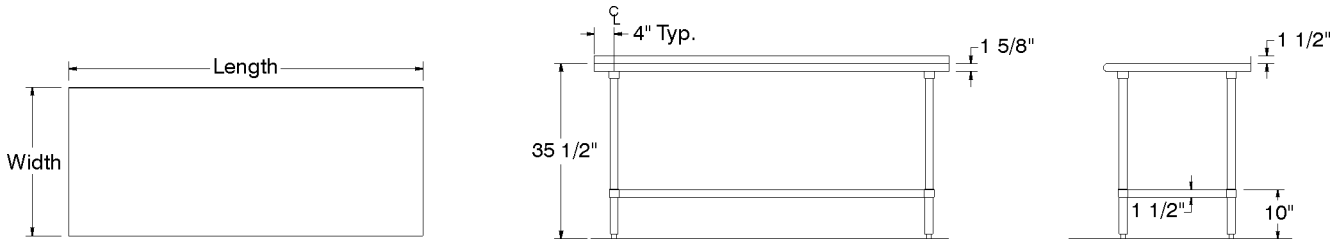
TOL  $\pm$  .500"

ALL DIMENSIONS ARE TYPICAL

## ELAG SERIES, SLAG & MSLAG SERIES - Flat Top



## SFLAG SERIES & FLAG SERIES - 1 1/2" Backsplash



## KLAG SERIES & KSLAG SERIES- 5" Backsplash

