



STAINLESS STEEL
HAND SINKS
 with **SOAP** and **PAPER TOWEL DISPENSER**



Item #: _____ **Qty #:** _____

Model #: _____

Project #: _____



7-PS-80



7-PS-79



7-PS-85

**Includes
Skirt**



7-PS-69



For **A.D.A Compliant Units**
 with a paper towel dispenser,
 please **see Model 7-PS-41** on the
A.D.A. Hand Sink Specification Sheet

**Keyhole Bracket for
easier installation
and greater stability.**



FEATURES:

One piece **Deep Drawn** sink bowl design.

Sink bowl is 10" x 14" x 5".

All sink bowls have a large liberal radii with a minimum dimension of 2" and are rectangular in design for increased capacity.

Keyhole wall mount bracket.

Stainless steel basket drain 1-1/2" IPS.

Towel dispenser with hinged towel box. Unit uses standard C-fold towels.

Liquid Soap Dispenser.

Splash mounted 4" O.C. gooseneck faucet furnished with aerator.

Specific Features:

7-PS-69 wrist handle faucet. Side support brackets included.

7-PS-69 & 7-PS-80 lever operated drain and built-in overflow with plastic overflow tube and spring clamps. P-Trap is 1 1/2".

7-PS-85 chrome plated 1 1/2" P-Trap & apron.

CONSTRUCTION:

All TIG welded.

Welded areas blended to match adjacent surfaces and to a satin finish.

Die formed Countertop Edge with a No-Drip offset.

One sheet of stainless steel- No Seams.

MATERIAL:

Heavy gauge type 304 series stainless steel.

Wall mounting bracket is Galvanized and of offset design.

All fittings are brass / chrome plated unless otherwise indicated.

MECHANICAL:

Faucet supply is 1/2" IPS male thread hot and cold.

Standard Faucet conforms to NSF 61 Standard 9. An optional faucet upgrade is required for compliance to AB 1953 Standards.

For Replacement Faucets & Upgrades, Drains & Accessories
 visit our website at www.advancetabco.com



Customer Service Available To Assist You 1-800-645-3166 8:30 am - 8:00 pm E.S.T.

Email Orders To: customer@advancetabco.com. For Smart Fabrication™ Quotes, Email To: smartfab@advancetabco.com or Fax To: 631-586-2933

NEW YORK
 Fax: (631) 242-6900

GEORGIA
 Fax: (770) 775-5625

TEXAS
 Fax: (972) 932-4795

NEVADA
 Fax: (775) 972-1578

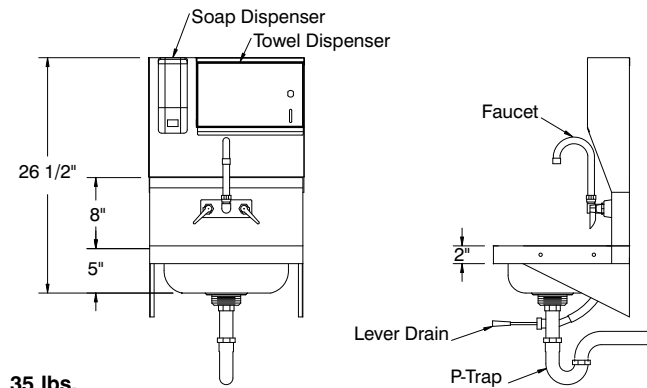
DIMENSIONS and SPECIFICATIONS

TOL Overall: $\pm .500"$ Interior: $\pm .250"$

FITTINGS SUPPLIED AS SHOWN

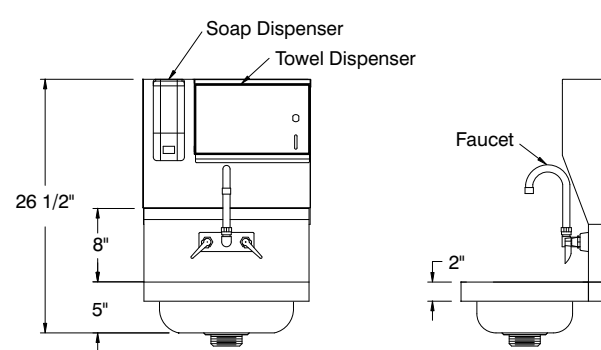
ALL DIMENSIONS ARE TYPICAL

7-PS-69



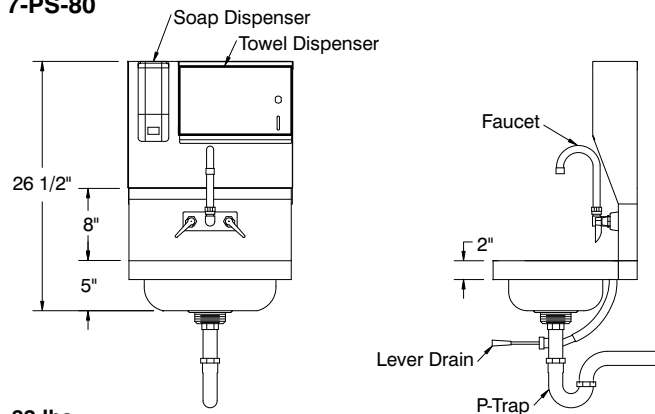
35 lbs.

7-PS-79



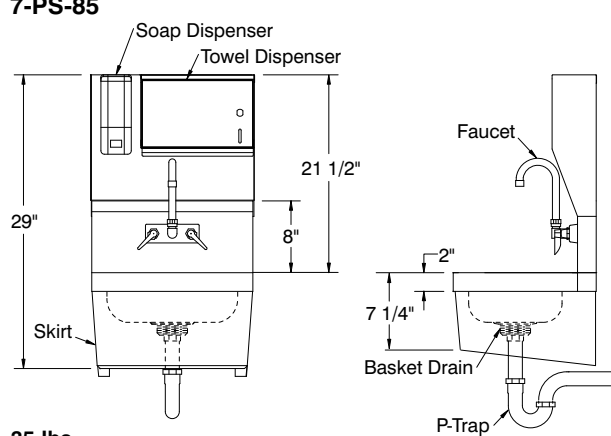
32 lbs.

7-PS-80

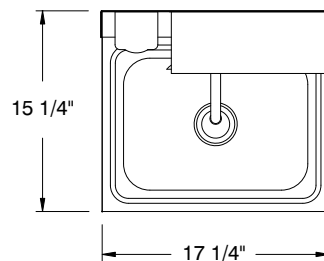


32 lbs.

7-PS-85



35 lbs.



**TOP VIEW
WITH TOWEL
DISPENSER**

